

Figure Guidelines for Authors: format, style and technical considerations

Authors are expected to provide final figures that conform to the journal style and meet the technical requirements for online and print publication. Minor adjustments are often needed to suit the journal style and for this reason we prefer to receive illustrations in a format that allows us to adjust figure elements, such as line thickness, symbols, fill colours and fonts, if necessary. However, costs of reworking substandard figures will be charged to authors.

Figure size

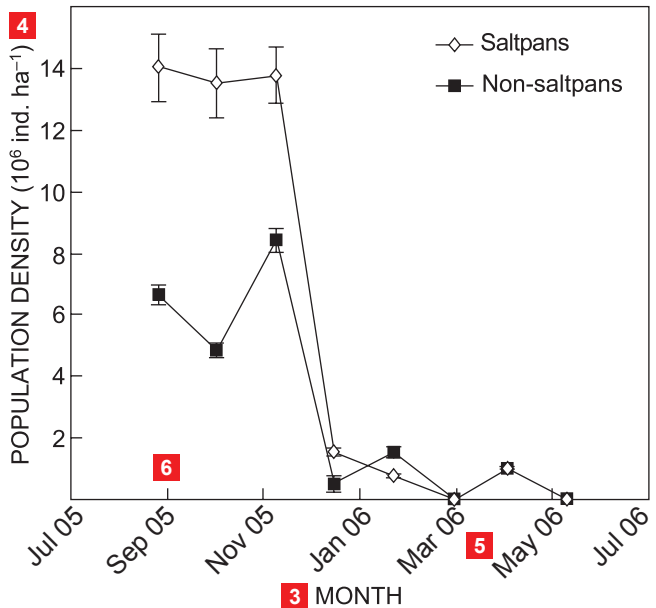
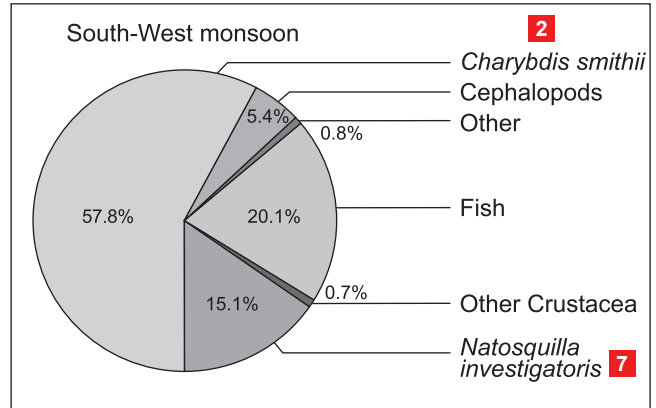
- For larger format journals (210 × 275 mm page size), figures should be prepared as (a) single (84 mm) or (b) double (176 mm) column width, with a maximum depth of 225 mm to allow space for the figure caption.
- For smaller format journals (170 × 240 mm page size), figures should be prepared as no wider than 140 mm and maximum depth should be 190 mm.

Graphs and pie charts

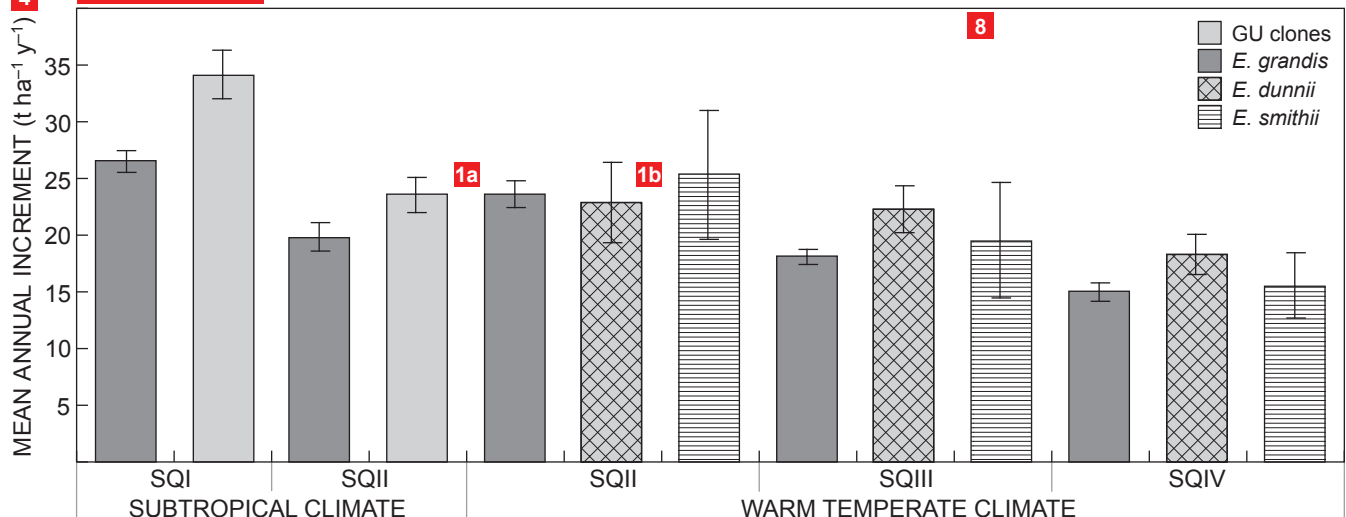
1. Grey shading is preferable (1a) but patterns may be used where necessary (1b)
2. Labels taken out of the pie chart to reduce clutter
3. Axis labels 9 point Arial, upper case
4. Units in lower case, in parentheses
5. Axis label slanting where appropriate
6. Tick marks 0.5 point, inwards facing (for clarity)
7. Text in graphics usually 8 point Arial
8. Charts to be boxed with 0.5 point line

Graphs, pie charts and flow charts can be generated in MS Excel, MS Powerpoint or Adobe Illustrator and supplied as XLSX, PPTX or AI format files, respectively. Where a specialist drawing or statistics program is used to generate graphs, export these as AI, EPS, EMF, PDF, SVG or WMF files to preserve the vector format and allow for minor changes to be made, where necessary. DO NOT embed, paste or insert illustrations into an MS Word document as this can render them uneditable and they may need to be resupplied.

a: single column

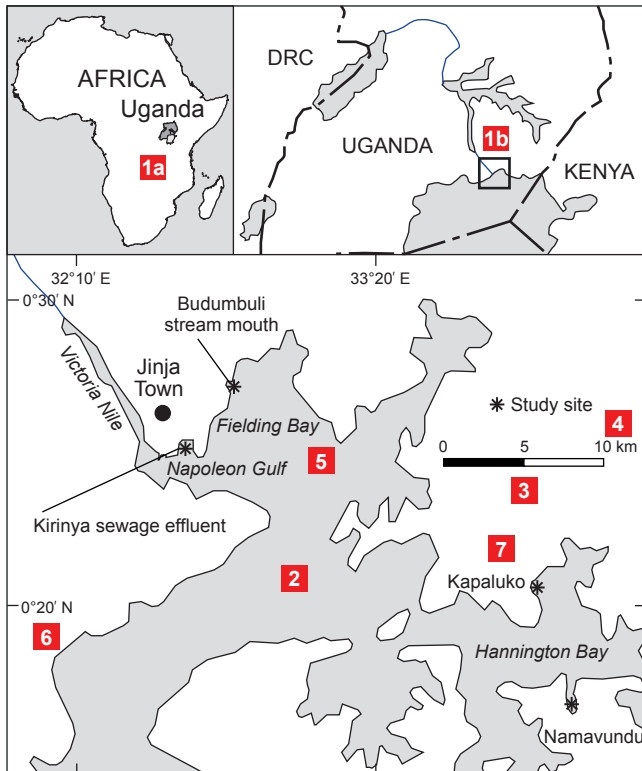


b: double column



Maps

1. Inset map shows (a) locality of country of study within the continent, and (b) locality of study site within the country
2. Water bodies are shaded grey and continental areas white
3. Include scale bar on maps; scale bar to be simple, as shown, and not too large
4. Note space between numerical value and unit
5. Labels of water bodies in italics (oceans, islands, rivers, etc.)
6. Supply latitude and longitude with relevant tick mark; one on each axis is sufficient; note the format with a space between the numerical value and the N/S/E/W indicator
7. Font size of text within maps ranges from 6 to 9 point Arial

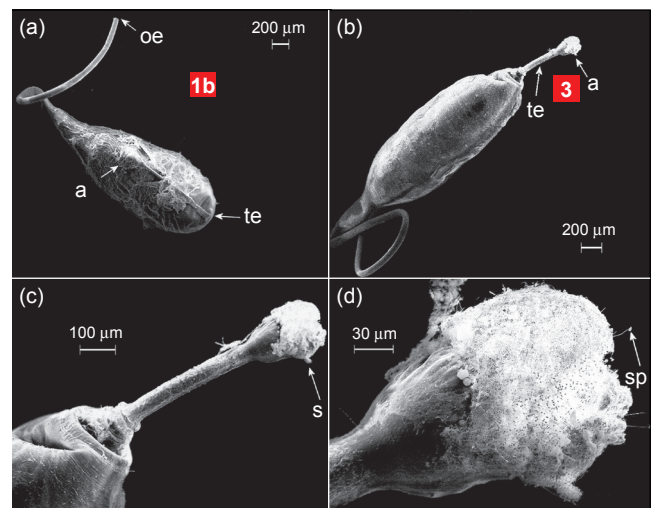


Maps should be generated using a drawing program such as Adobe Illustrator and supplied as AI, EPS or PDF format files. Where a specialist mapping program, such as ArcGIS, is used, export the final maps as AI, EMF, EPS, PDF, SVG or WMF files.

Note: When working with ArcGIS (and ArcVIEW) generated maps containing patterns, ensure that you DO NOT use unique values linked to individual field attributes, otherwise this results in an unmanageably large file. See the Frequently Asked Questions (FAQs) for further details.

Photographs and scanned images

1. Digital photographs and scanned images MUST be supplied at the correct resolution:
 - (a) Colour or greyscale images must have a resolution of at least 300 dpi, equivalent to 1000 × 800 pixels for a one-column (85 mm) width photograph.
 - (b) Scanned line drawings or photographs that include any lines or text labels must have a minimum resolution of 600 dpi, equivalent to 2000 × 1600 pixels for a one-column (85 mm) width photograph.
2. Any labels on photographs must be placed on a separate layer. Alternatively, submit an electronic version of the unlabelled photograph and we will add labels in the correct format.
3. Font size of labels is 6 to 9 point Arial.



Digital photographs and scanned images should be supplied (in order of preference) as PSD, PDF, TIFF or JPEG format files. For JPEG format files, choose settings for maximum quality, even if this produces a large file size. See FAQs for further details.

Further information

For clarification of technical requirements, or for a quotation for redrawing, please contact our graphics department at graphics@nisc.co.za. You can also consult our FAQs for additional technical information.