

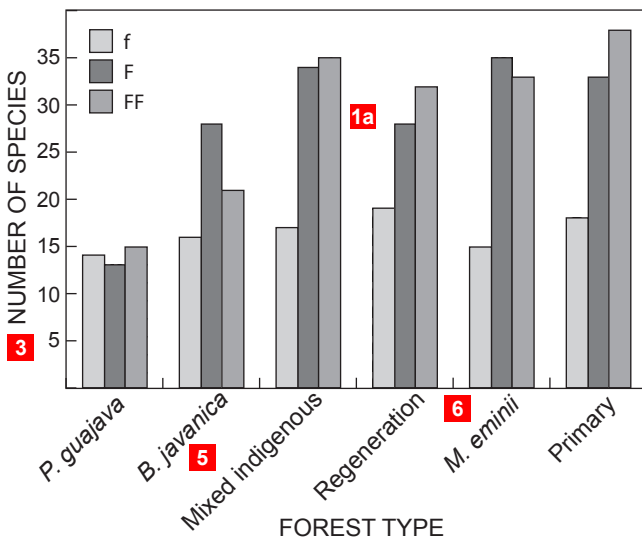
Figure Guidelines for Authors Publishing in AJMS: format, style and technical considerations

Figure size

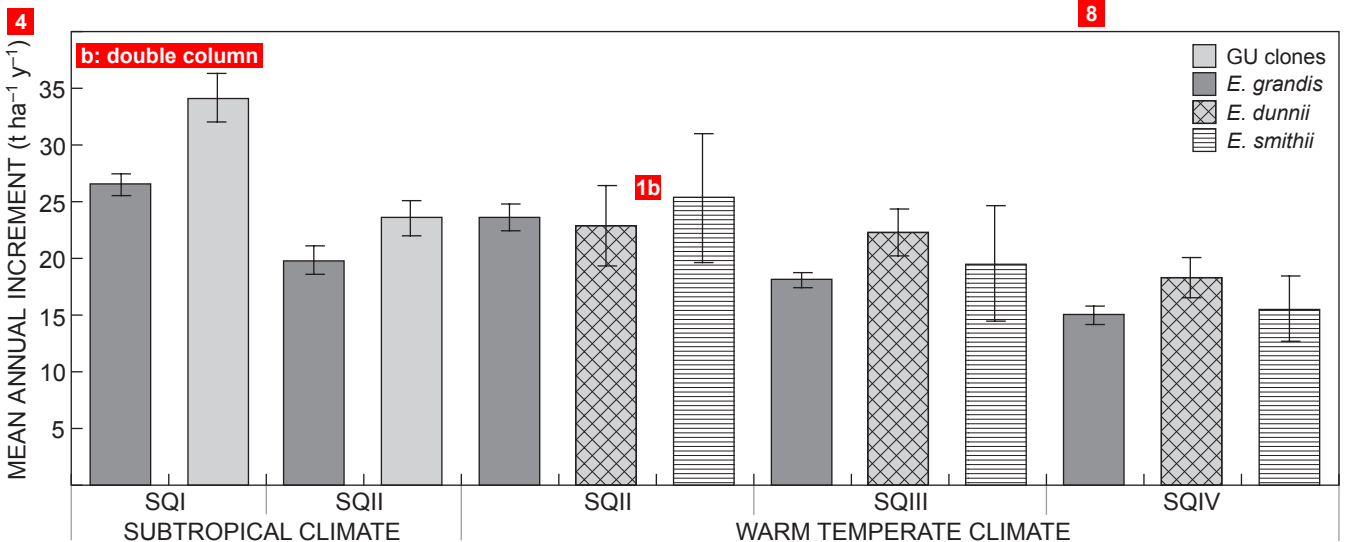
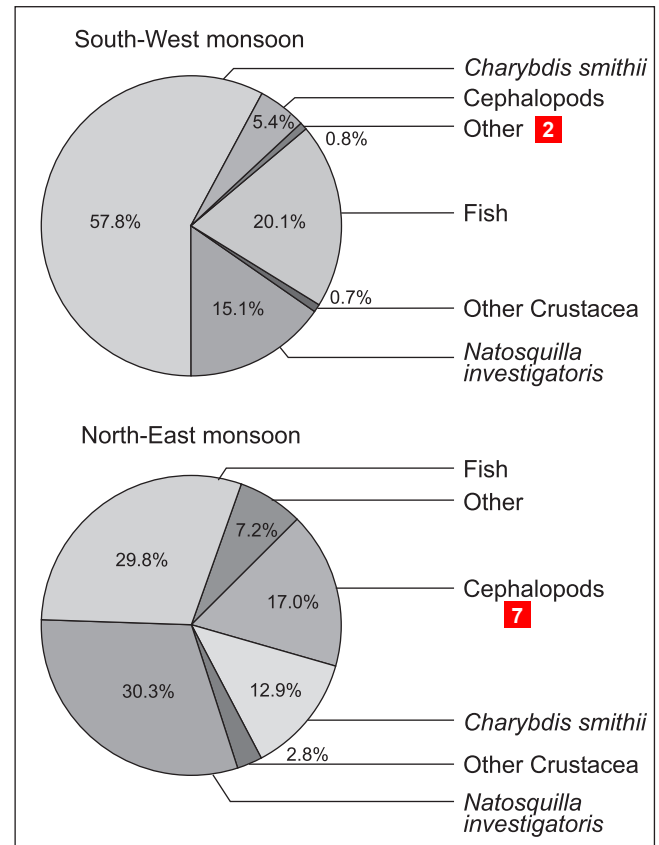
- For larger format journals (210 × 275 mm page size), figures should be prepared as (a) single (84 mm) or (b) double (176 mm) column width.
- For smaller format journals (170 × 240 mm page size), figures should be prepared as no wider than 140 mm.

Bar graphs and pie charts

1. (a) Grey shading is preferable but (b) patterned bars may be used where necessary
2. Labels taken out of pie chart to reduce clutter
3. Axis labels 9 point Arial, upper case
4. Units in lower case, in parentheses
5. Axis label slanting where appropriate
6. Tick marks 0.5 point, inwards facing
7. Text in graphics usually 8 point Arial
8. Charts to be boxed with 0.5 point line

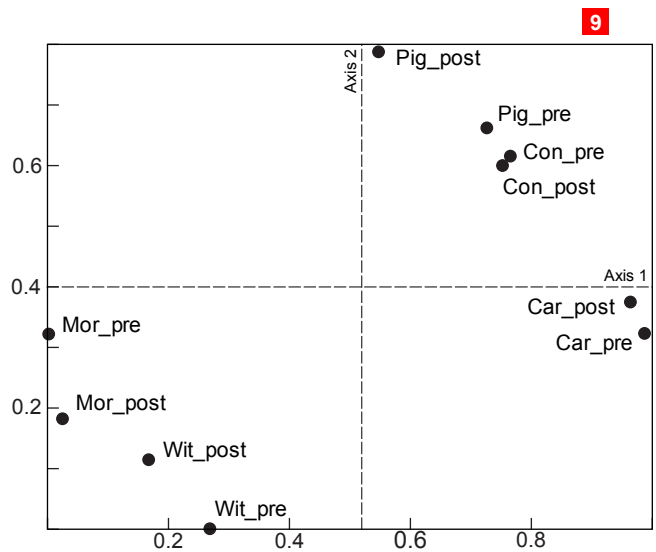
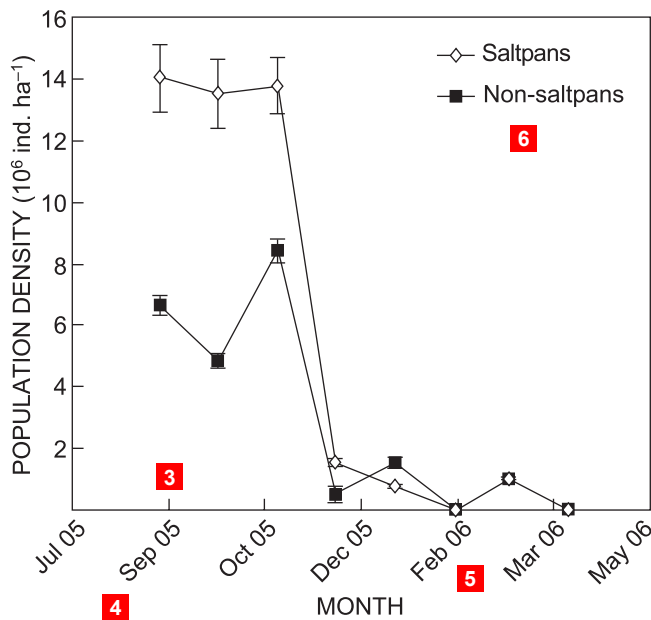
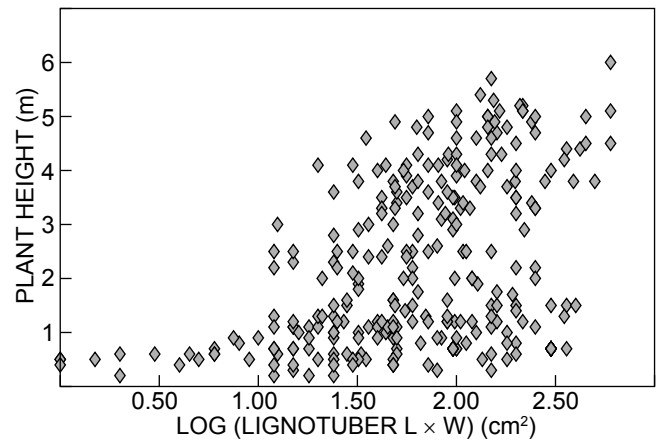
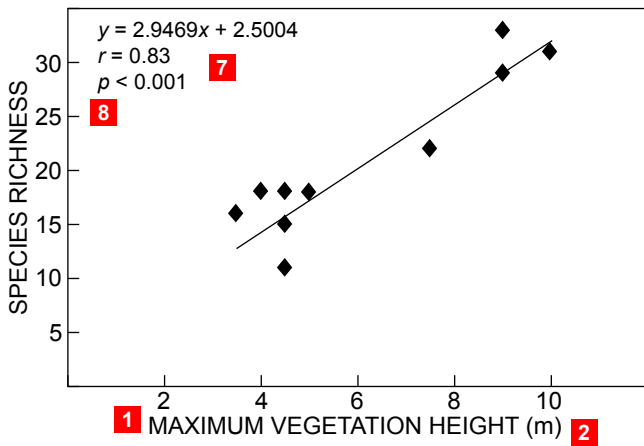


a: single column



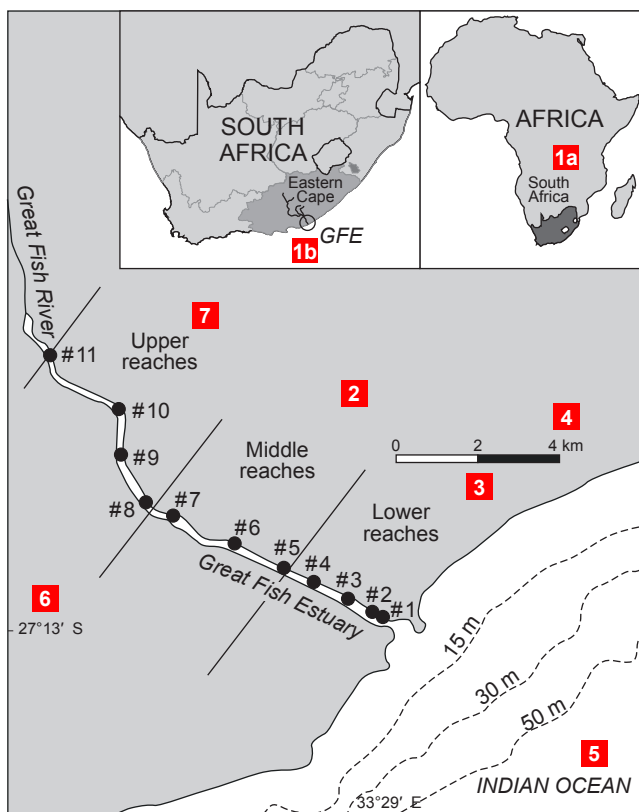
Other graph types

1. Axis labels in 9 point Arial
2. Units in parentheses, lower case
3. Tick marks 0.5 point, inwards facing
4. Axis labels slanted where appropriate
5. Month abbreviations with no full stop
6. Text in graphics usually 8 point Arial
7. Statistics pertaining to trend lines to be included in graph where possible
8. Variables in italics
9. Boxes around graphics 0.5 point



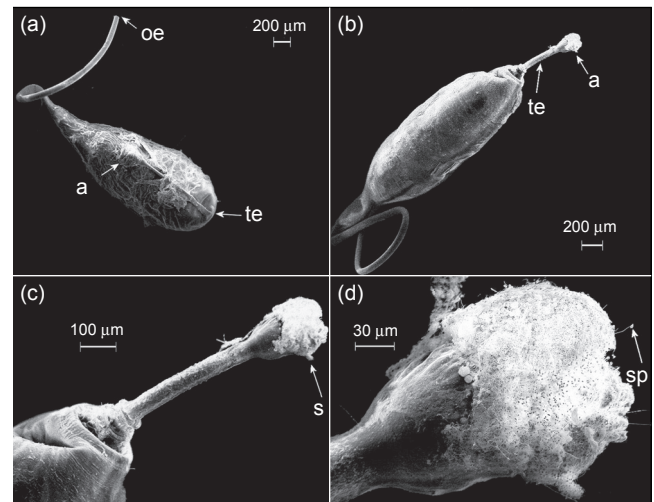
Maps

1. Inset map shows (a) locality of country of study within the continent, and (b) locality of study site within the country
2. Continental areas are shaded grey and ocean white
3. Include scale bar on maps; scale bar to be simple as shown, and not too large
4. Note space between numerical value and unit
5. Labels of water bodies in italics (oceans, islands, rivers, etc.)
6. Supply latitude and longitude with relevant tick mark; one on each axis is sufficient; note the format with a space between the numerical value and the N/S/E/W indicator
7. Font size of text within maps ranges from 6 to 9 point Arial



Photographs and scanned images

- Images must have resolution of at least 300 dpi
- Any labels on photographs must be placed on a separate layer. Alternatively, submit an electronic version of the unlabelled photograph and we will add labels in the correct format
- Font size of labels is 6 to 9 point Arial



Technical considerations

File formats: Save illustrations as separate files in PSD (Adobe Photoshop) or AI (Adobe Illustrator) format or save as TIFF, EPS, PDF or JPG files (using the 'save as' or 'export' commands of your graphics program). MS Office files (Word, Powerpoint, Excel) are acceptable provided any embedded files are the correct resolution (see below).

Bitmap images: Scanned images and digital photographs must have a resolution of at least 300 dpi for colour or grayscale (halftone) pictures and at least 600 dpi for any scanned black line art.

Vector graphics: For graphs, maps and similar illustrations make sure that any fonts used in the illustration have been embedded. Any scanned bitmap images incorporated into graphs or maps should be at an appropriate resolution.

Layers: Where layers have been used in producing complex illustrations we prefer that the image is not flattened so as to facilitate any minor editing.